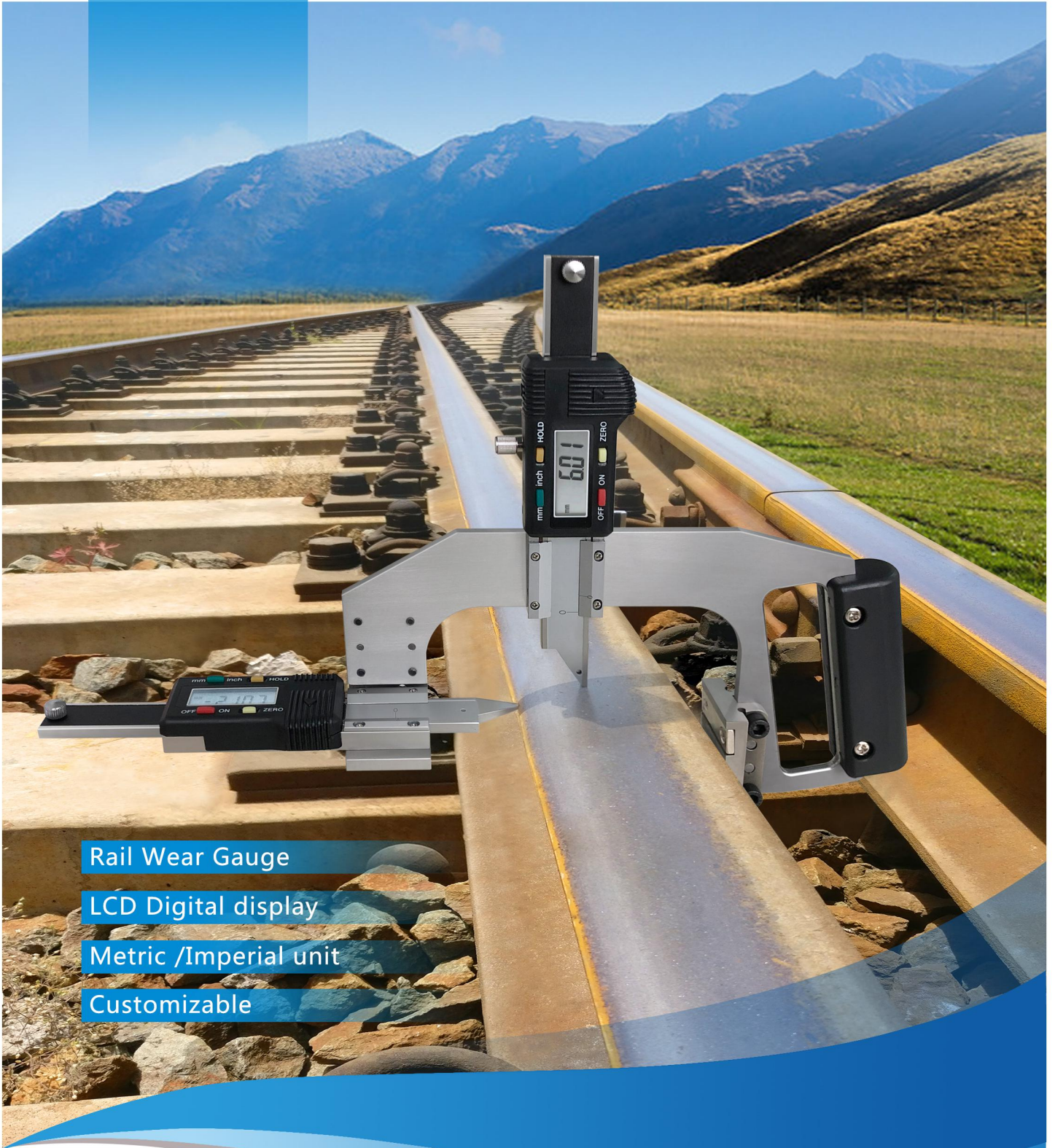




LIANJIE

# LJ-GM-A

Rail Wear Gauge



Rail Wear Gauge

LCD Digital display

Metric /Imperial unit

Customizable



## • Introduction:

Digital rail wear gauge are used to measure the vertical and lateral wear of rail. The reasonable design makes it light, convenient operation and intuitive reading .

LCD Digital display, Swith between metric and imperial unit at will ,that help easy to read.

Metric unit



Imperial unit



Equipped with a simple calibrator ,it could be used for quick calibration before use.



Package



### Main Technical parameter :

#### Digital type

Unit(mm)

Model	Measure range (mm)	Division value (mm)	Indication error (mm)
LJ-GM-A	Vertical wear 0~15	0.01	± 0.15
	Lateral wear 0~25		

#### Mechanical type

Unit(mm)

Model	Measure range (mm)	Division value (mm)	Indication error (mm)
LJ-GM-B	Vertical wear 0~15	0.1	± 0.3
	Lateral wear 0~25		

✉ [info@xyljld.com](mailto:info@xyljld.com)

🌐 <http://www.linkrailtech.com>

📍 Company Add: Sifu Technology Industrial Park No.1 Qilin Road, XiangCheng District ,XiangYang City, Hubei Province, China